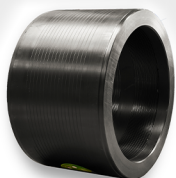


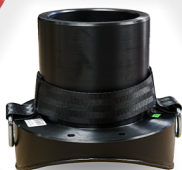
# ELECTROFUSION FITTINGS



## STRONGBRIDGE



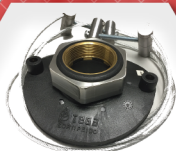
Couplers



Saddles



Tapping  
Tees



Threaded  
Saddles  
Short Outlet



Equal  
Tees



Flex  
Restraints



Threaded  
Saddles  
Long Outlet



Reducers



90° Elbows



45° Elbows

### Engineered for Durability Built to Last ▶▶▶▶▶▶▶▶

Offering an extensive range of industrial grade, heavy-duty HDPE electrofusion fittings.

Strongbridge offers the largest size and pressure-class range of electrofusion available. As the originator of large diameter electrofusion couplers and saddles, we can custom design and manufacture specific to your project needs.

Our electrofusion fittings are made with the very best materials in our ISO 9001 facility to meet international and domestic standards, including ASTM, AWWA, NSF and FM Approvals.\*

- **High-density polyethylene PE4710/100**
- **Your best choice for a leak-free system**
- **High chemical resistance**
- **Impact resistance at low temperatures**
- **Resistant to corrosion and abrasion**
- **Light weight**
- **Easy installation**
- **Butt fusion, electrofusion and mechanical connection ready**
- **IPS, DIPS and CTS sizes available**
- **Pressure ratings to 360 psi**

\* For sizes please inquire for details



Strongbridge electrofusion fittings meet international and domestic standards certified to NSF/ANSI 61 for potable water and are suitable for water reclamation / irrigation, landfill and industrial use. Quality certificates are available upon request.



[www.strongbridge.us](http://www.strongbridge.us)

To learn more about how Strongbridge can help, contact us by phone, email or visit our website to check out our products and services.

---

**STRONGBRIDGE**

---



**Strongbridge International LLC**  
Jacksonville, FL  
T: (904) 278-7499  
F: (904) 278-7501  
E: [contact@strongbridge.us](mailto:contact@strongbridge.us)

**[www.strongbridge.us](http://www.strongbridge.us)**

Strongbridge International LLC is not responsible for error or omissions in the content of this document. The information in this document is for reference purposes only and is not to be relied upon or substitute engineering documentation. All information is provided "as is", with no guarantee of completeness or accuracy and is subject to change without notice.

© 2020 Strongbridge International LLC SSMF-2020